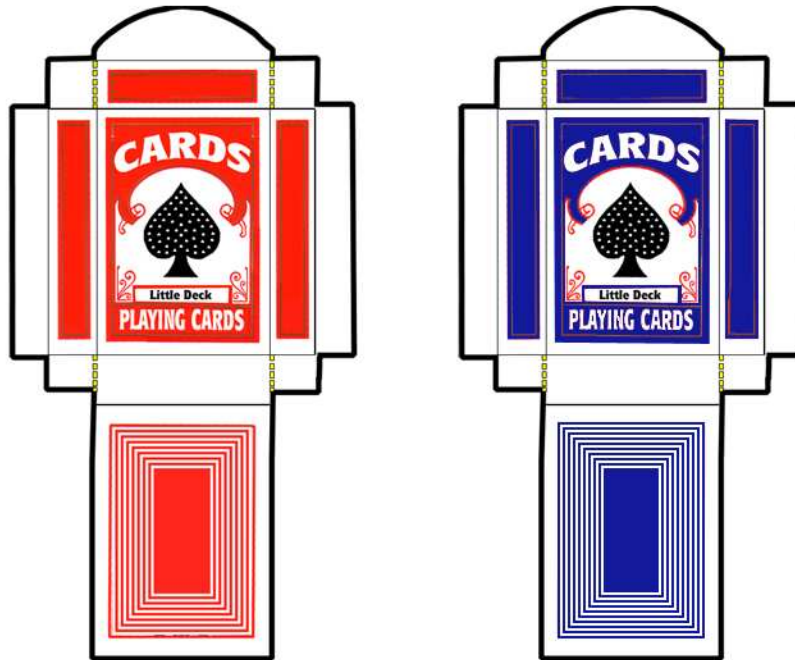


Shrinking Card Case



Directions:

There are detailed video directions on the DVD or video of "Magic Tricks You Can Do 2".

- 1) Completely cut out card box. (trim the black border away from card box template)
- 2) Cut on the yellow Dashed line. (creates 4 tiny flaps)
- 3) Fold on all of the thin black fold lines.
- 4) Fold box together and glue or tape together.